



Brandfolder › Brandfolder Admin Users › Integrations and Plugins

## CI HUB | Advanced Adobe Integration



Peter Moore  
June 30, 2020 15:20

**FOLLOW**

### Brandfolder Admin Users ▼

Getting Started as an Admin ›

Brandfolder Guides ›

Privacy and Security ›

User Management ›

Anatomy of an Asset ›

Asset Management ›

Searching and Filtering ›

Rights Management ›

Embedding & Sharing ›

Analytics & Insights ›

Templating ›

**Integrations and Plugins** ▼

Gelato Integration

Embedding Smartsheet Forms

Sitecore Connector

CI HUB | Advanced Adobe Integration

LinkrUI | Advanced Adobe Integration

Canva Integration

Microsoft Teams Integration

Embed Videos from Brightcove

Sketch

Slack Integration

Contentful Integration

HubSpot Integration

JIRA Integration

Microsoft Office Integrations

Wordpress Integration

Salesforce Integration

Web to Print

Adobe Plugin

Office 365 Integration

Google Analytics Integration

SAML & SSO

>

Brandguide

>

**Brandfolder Guest Users**

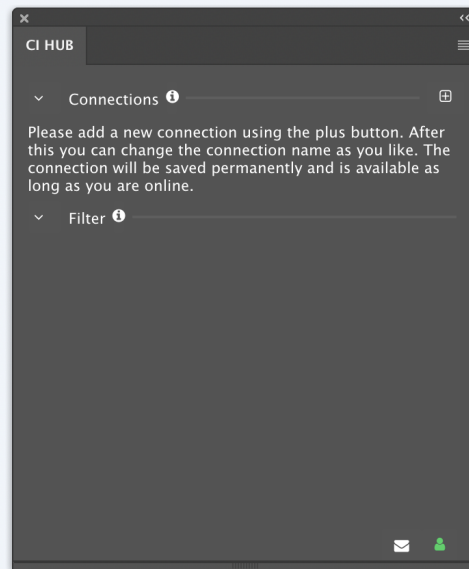
>

# Installation

Reach out to [support@brandfolder.com](mailto:support@brandfolder.com) to configure your account.

Once enabled, you will be directed to a page where you can download the plugin. Quit any adobe applications you are currently using, double click the installer to run, and follow any setup instructions.

In your Adobe application, you can find the extension under **Window > Extensions > CI HUB**.



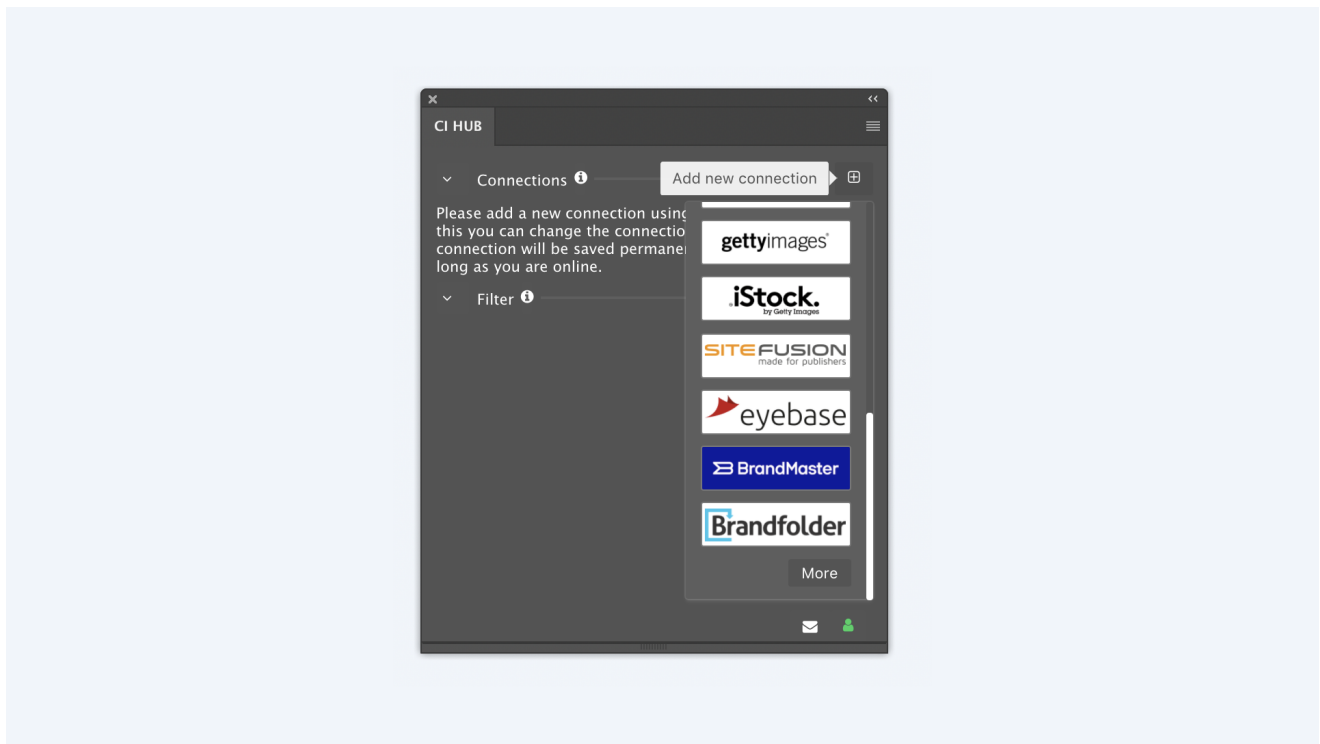
## Finding Content

### Connections

Connections will allow you to choose which service you'd like to connect to - in our case, that's Brandfolder. You can activate or deactivate the connection at any time, and the

connection will be saved

Click **Add New Connection** and scroll down to Brandfolder. This will open a page in your web browser that will prompt you to enter your API Key.

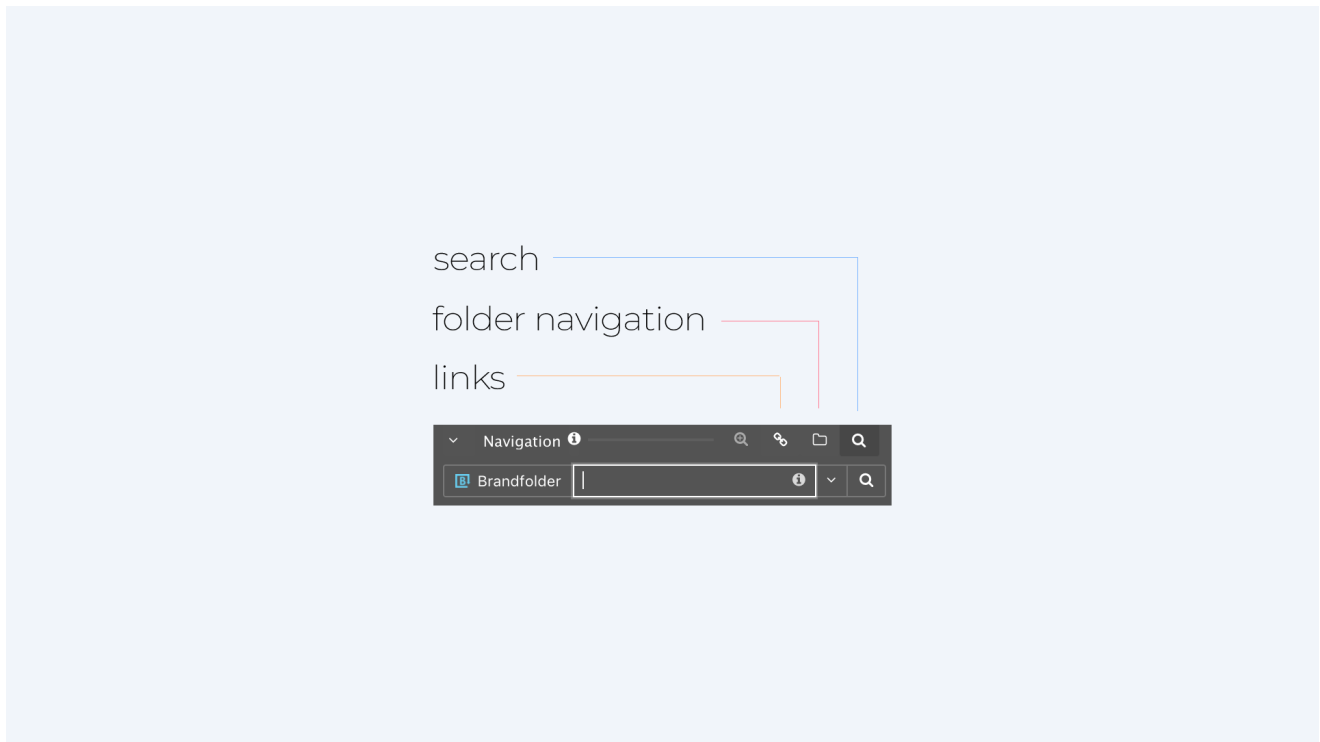


You can find your API key here, or in your **profile** under integrations:

<https://brandfolder.com/profile#integrations>

## Navigation

Navigation allows you to choose where you are looking for your content.



## Search

Searching in CI Hub works similarly to searching on Brandfolder. If your search query is pulling in too much content, try narrowing down your query with **strict searches**. You can do this by putting asset names and tags in quotes, like so:

“DEMO” AND “2018”

The screenshot displays the Brandfolder search interface. On the left, there are two filter sections: 'Top Tags' and 'Top File Types'. The 'Top Tags' section includes checkboxes for Sky (174), Outdoors (163), Nature (161), Text (120), Water (110), Building (100), Plant (89), Q3 Creative (87), Sea (87), and Line (83). The 'Top File Types' section includes checkboxes for jpg (393), png (179), pdf (36), mov (9), eps (8), ai (6), gif (6), otf (5), svg (3), and idml (2). The main search area shows a search bar with a '26' result count and a search query: 'Showing Results for: Sky,Outdoors,jpg'. Below the search bar, the 'Exact Query' is displayed as: '(tags.strict:"Sky" OR tags.strict:"Outdoors") AND filetype.strict:"jpg"'. The search results are organized into a folder named 'Lifestyle Photography' containing 8 Assets. Three asset thumbnails are visible: a woman looking at a cityscape, two people on a beach, and two people holding surfboards.

You can also use pinned searches and queries that we generated by clicking on tags or using advanced filters in Brandfolder.

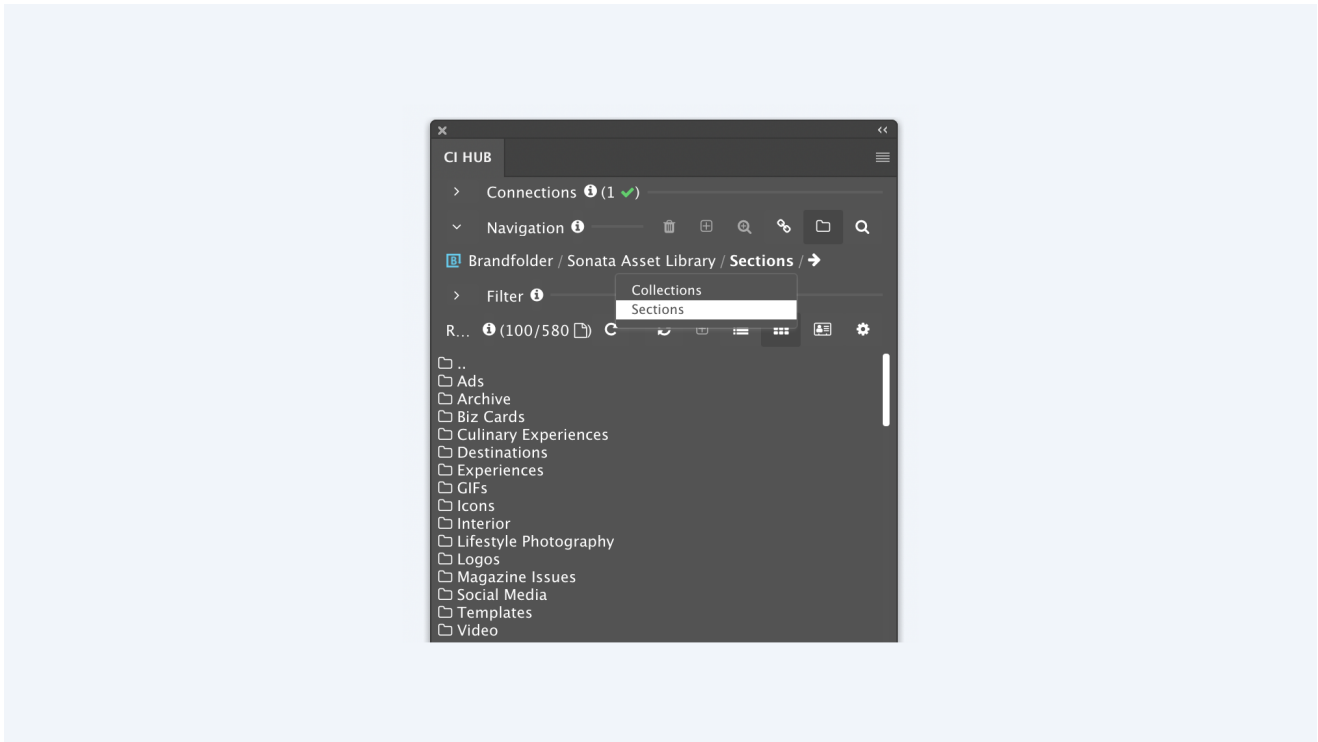
```
tags.strict:"08"
```

```
(tags.strict:"Sky" OR tags.strict:"Outdoors") AND filetype.strict:"jpg"
```

A history of recent searches can be found on the right side of the search bar.

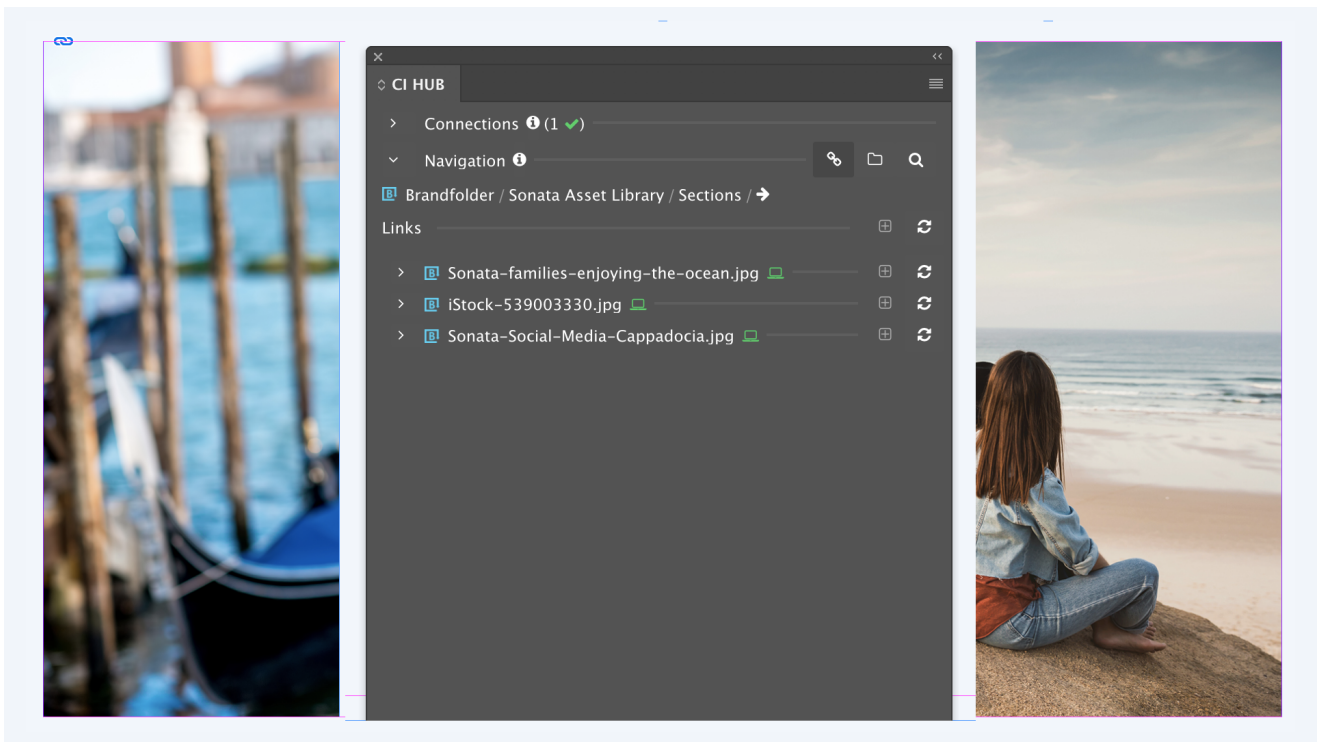
## Folder Navigation

Folder Navigation allows you to visually sort through the content hierarchy of your Brandfolder. You can use this method to find assets in a specific section or collection.



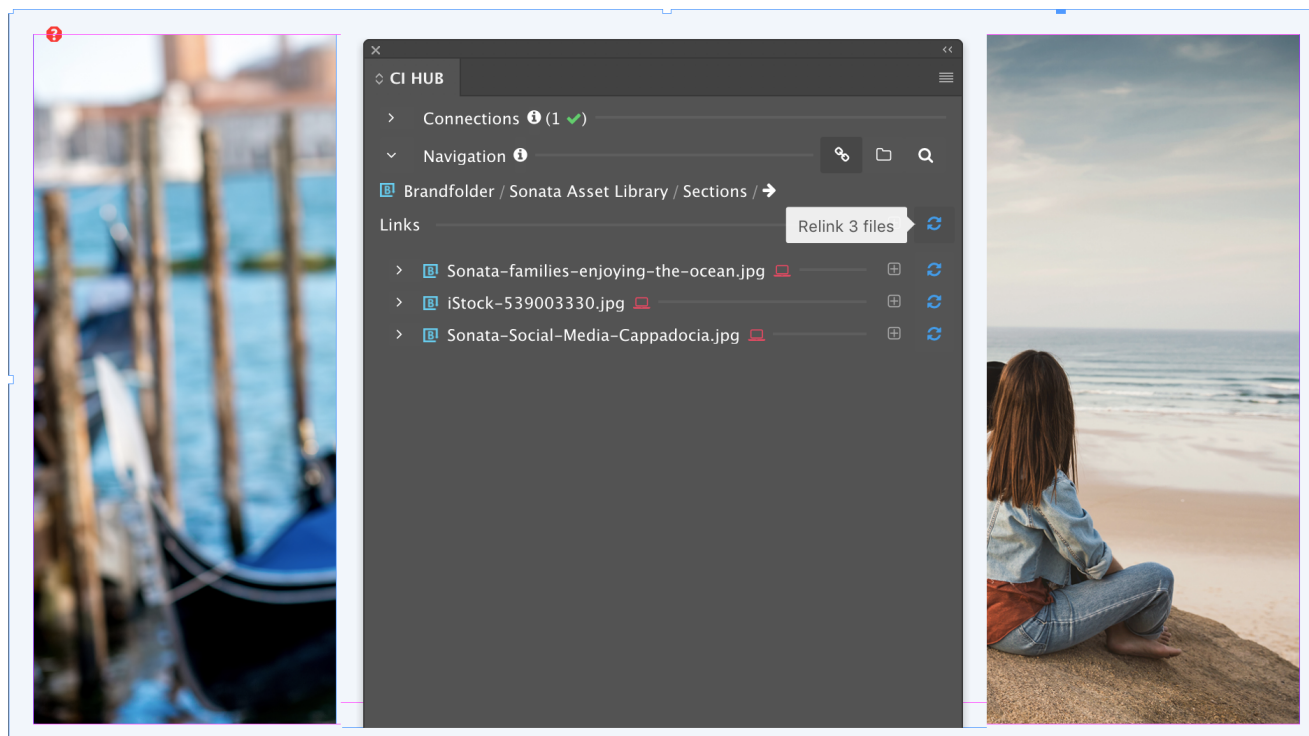
## Link Navigation

Link Navigation will show you the linked images in your document that are also connected to the DAM. Placing images using CI HUB will automatically populate this list.



The red icon will indicate when a local copy of the linked image is not available - if you download an InDesign document that another designer has been working on, this will likely

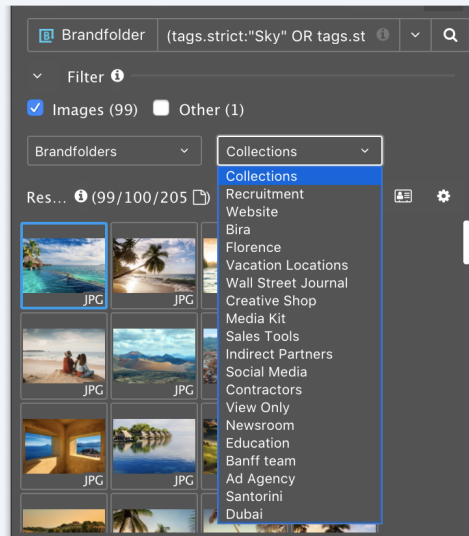
be the case. You can relink these images individually or all at once using the blue sync buttons on the right side of the panel. Doing so will pull the most current version of the asset into your document.



## Filter

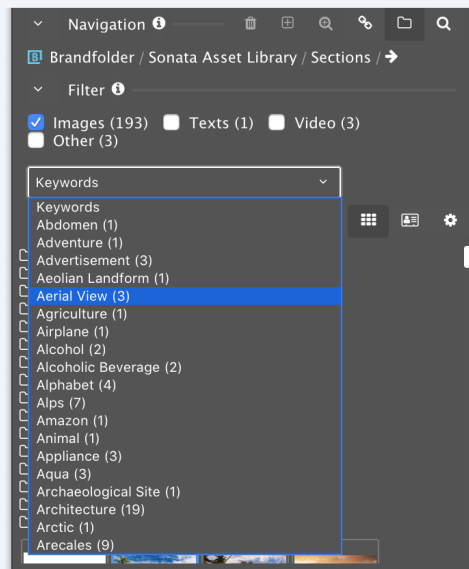
The filter dropdown will allow you to further narrow down the results when sorting through the content in your Brandfolder.



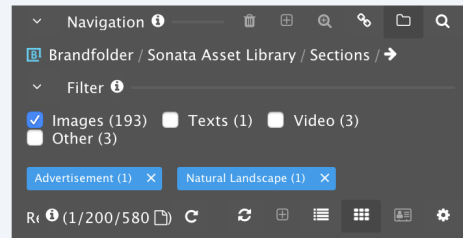


Filter options change depending on which **navigation option** is currently active.

The **checkboxes** allow for sorting by generic content types (Images, Videos, Layouts, etc).



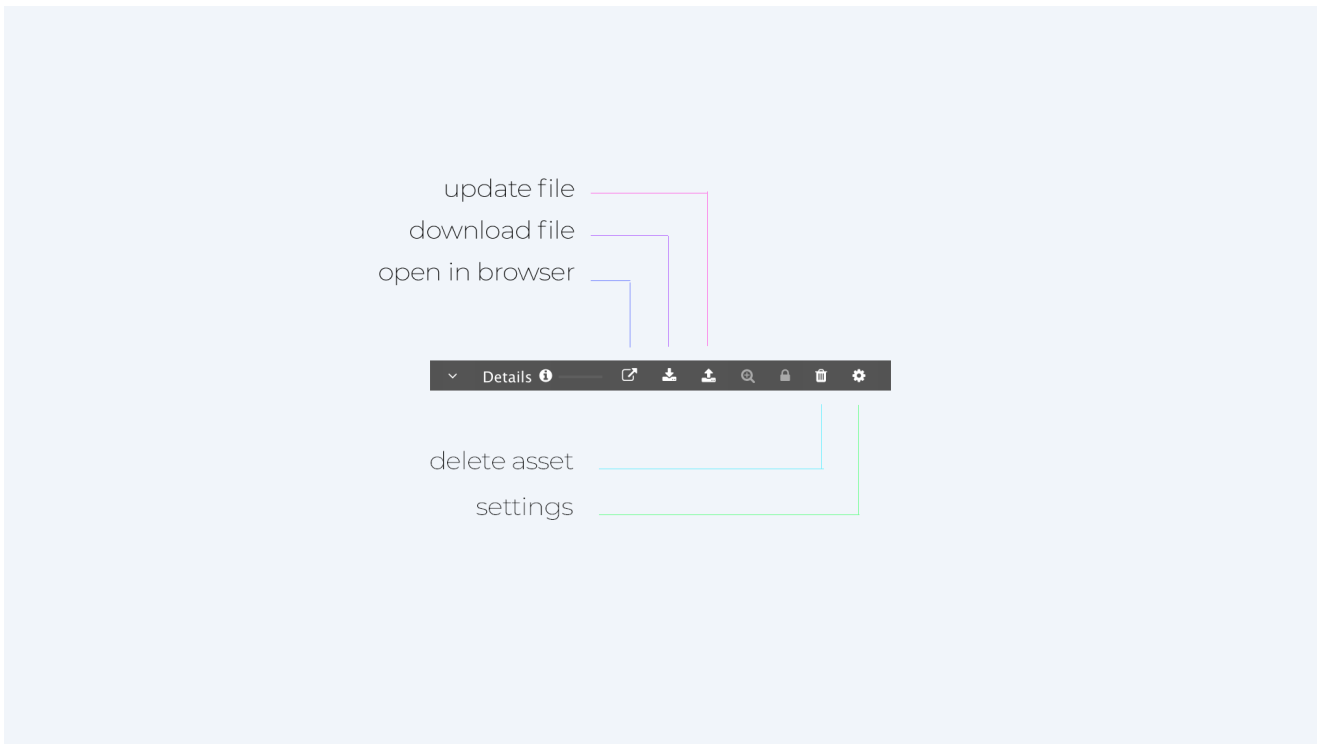
Filtering by **Keywords** (available when using the **Folder Navigation**) will pull a list of tags that are available for the area you are searching in, including a count for how many results you can expect to find with the rest of your filters active.



The Keywords bar will remain inactive when no other combinations of tags are possible. Clicking on the X to the right of the tag will remove it from your filters.

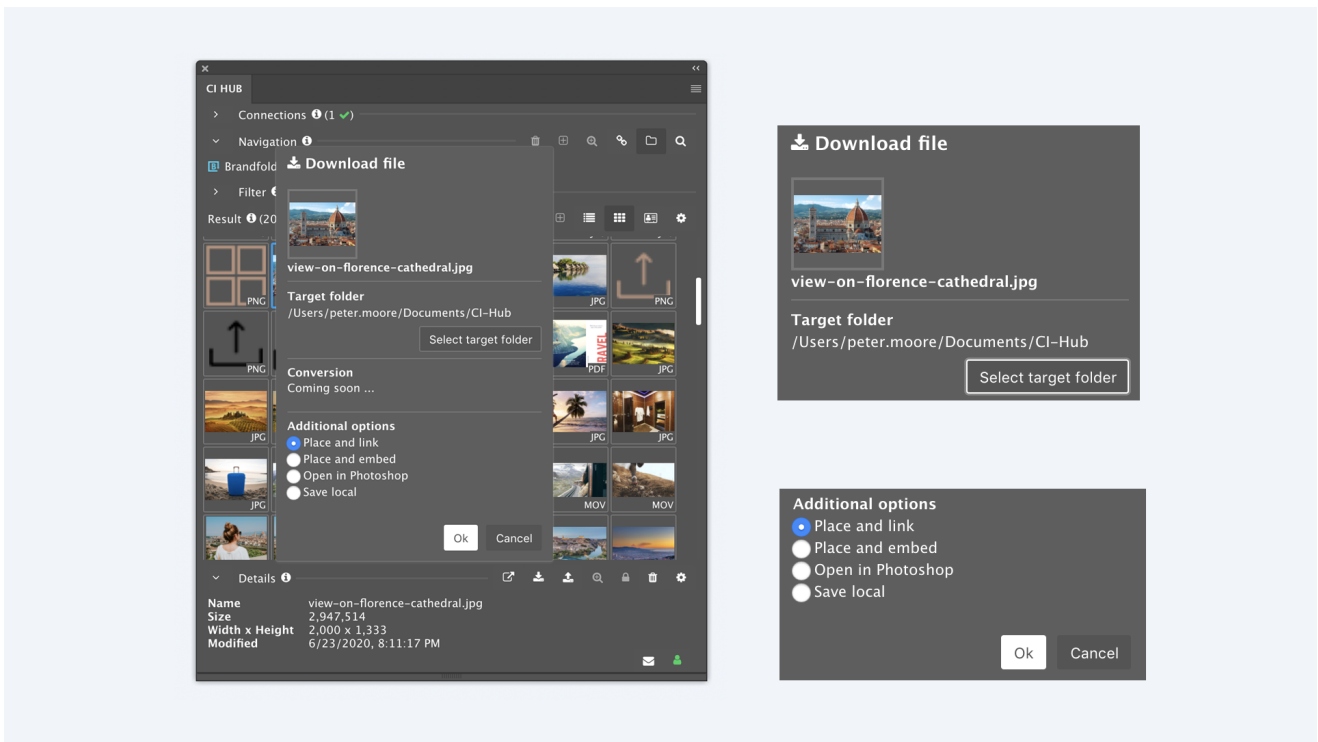
# Making Edits

## Details



## Download File

The details tab is where you will be able to interact with assets from Brandfolder. To bring content into your application, click the download file button.

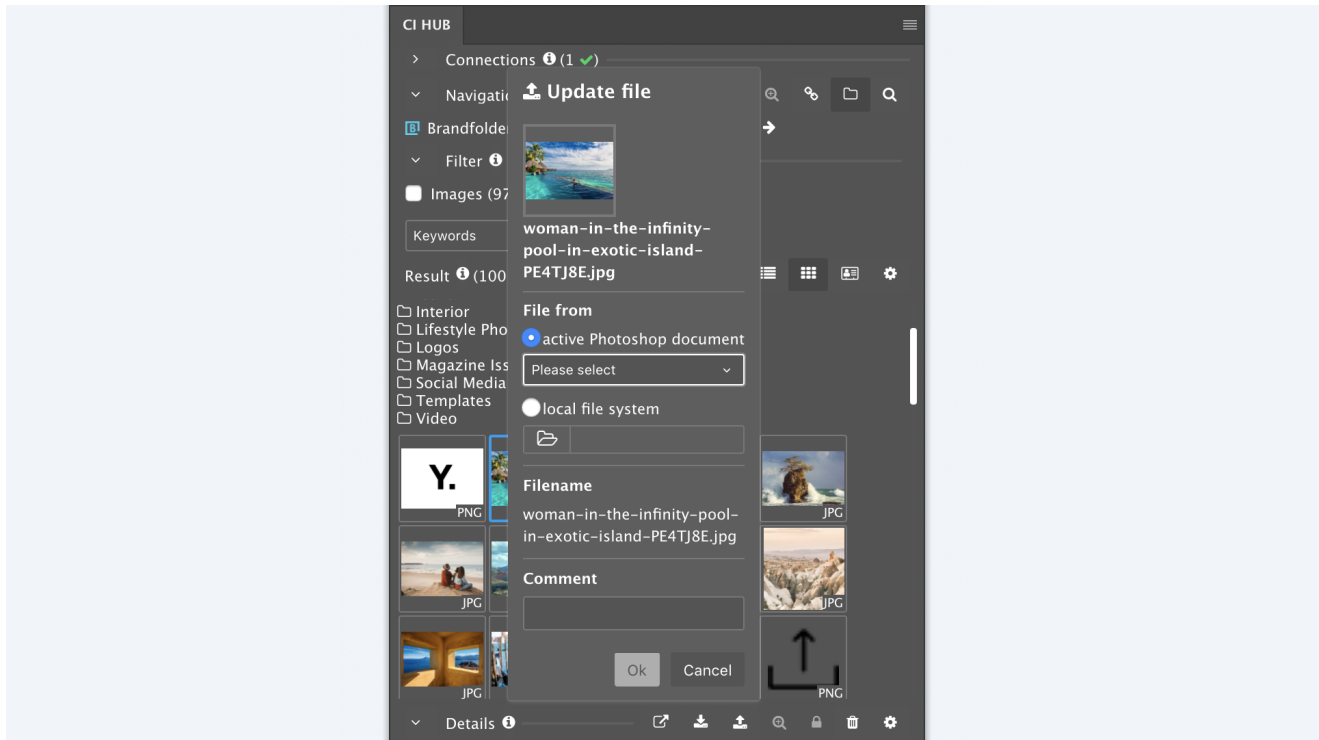


Here you will be able to choose how you want to bring content into the application, as well as a location for the image to live locally. You can also drag and drop from the image from

the plugin to quickly place and link. The file will be downloaded to the default target folder.

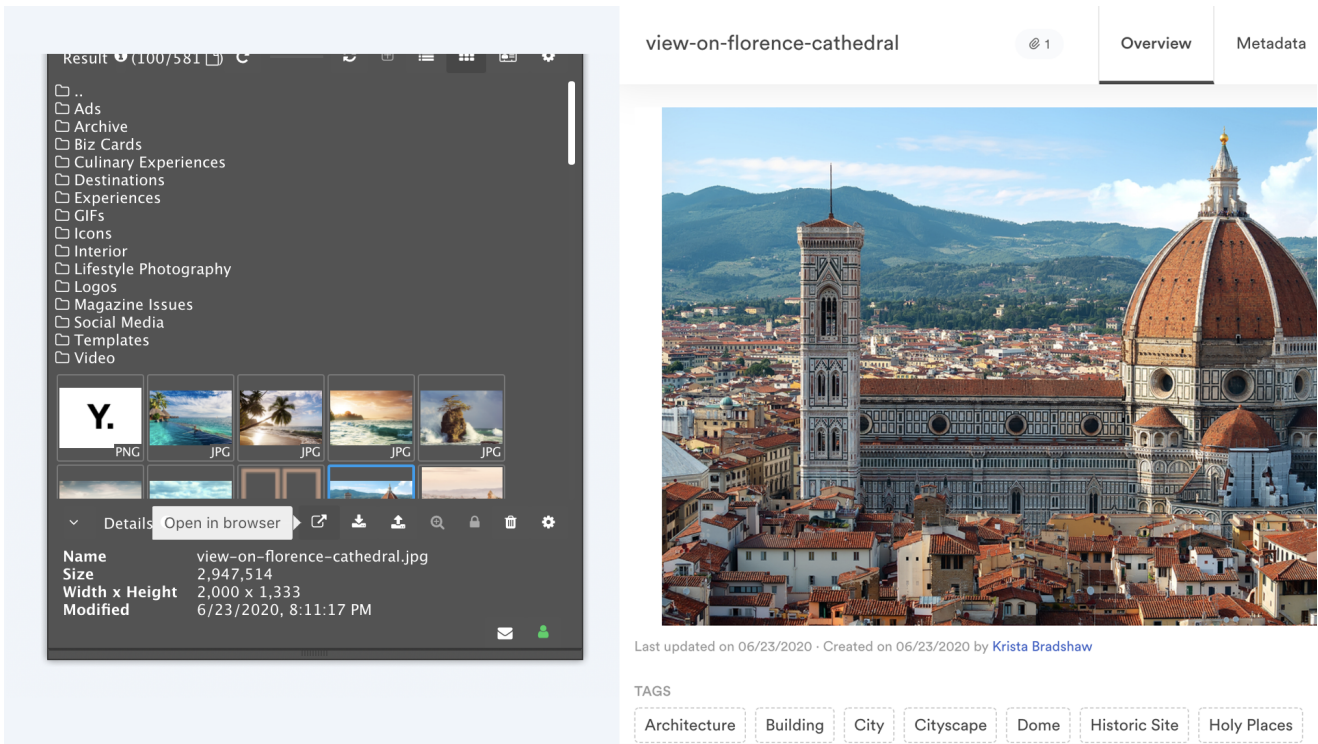
**Quick Tip!** *Option / Alt* clicking will replace an image behind a selected image frame and match the existing cropping settings.

## Update File



Update file will take either your active document or a local image and upload it as a new version of your asset. This change will be visible in the version history found under the **workflow tab** of the asset in Brandfolder.

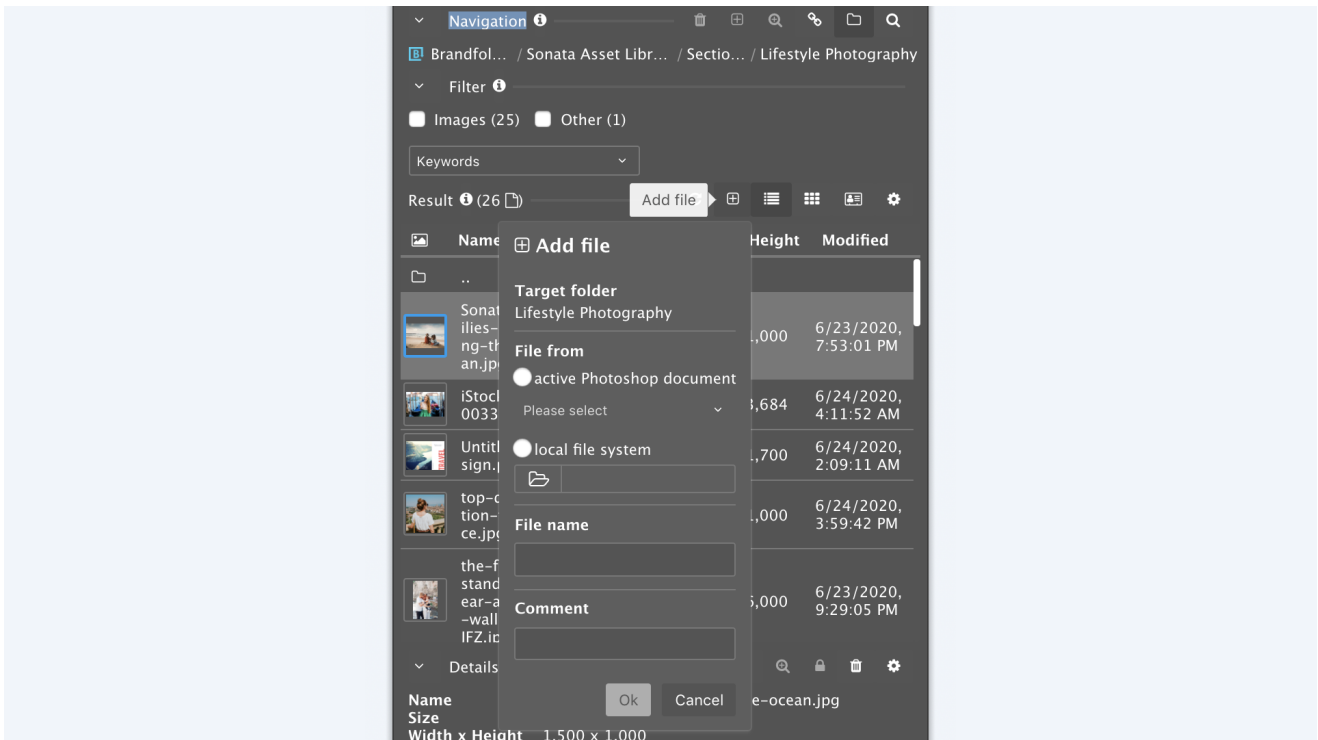
## Open in Browser



Open in Browser will take you directly to the asset in Brandfolder.

## Upload New Asset

The Add File button will upload a new asset using your active document or a file on your local system. You will need to use the folder navigation to find the area where you would like to add the asset - the Add File button will be located above the result for that area.



If you have any questions about the CI Hub integration please contact [support@brandfolder.com](mailto:support@brandfolder.com).

---

[Prev](#)[Next](#)

---

Was this article helpful?

0 out of 0 found this helpful



---

## Articles in this section

- [HubSpot Integration](#)
- [Gelato Integration](#)
- [Embedding Smartsheet Forms](#)
- [Sitecore Connector](#)
- [CI HUB | Advanced Adobe Integration](#)
- [LinkrUI | Advanced Adobe Integration](#)
- [Canva Integration](#)
- [Microsoft Teams Integration](#)
- [Embed Videos from Brightcove](#)
- [Sketch](#)

[See more](#)

© Brandfolder



ENGLISH (US) ▾